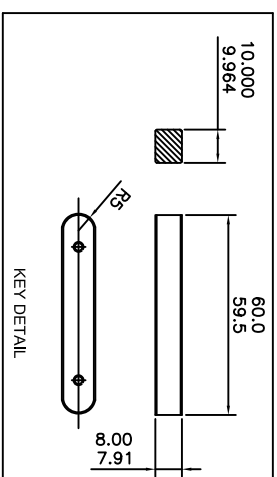
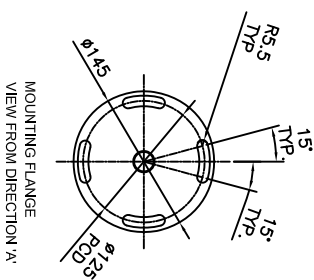
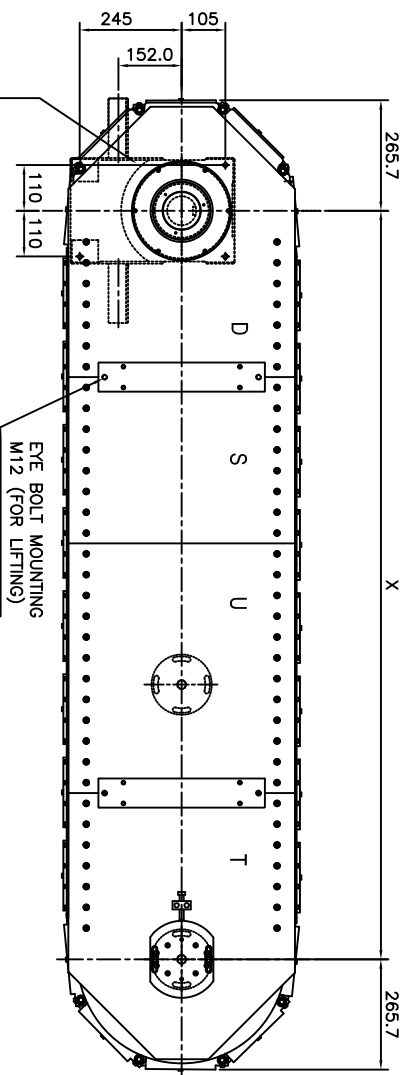
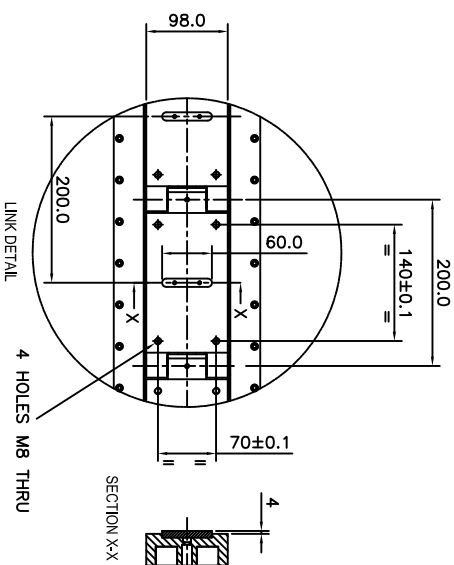
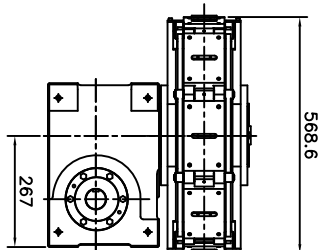
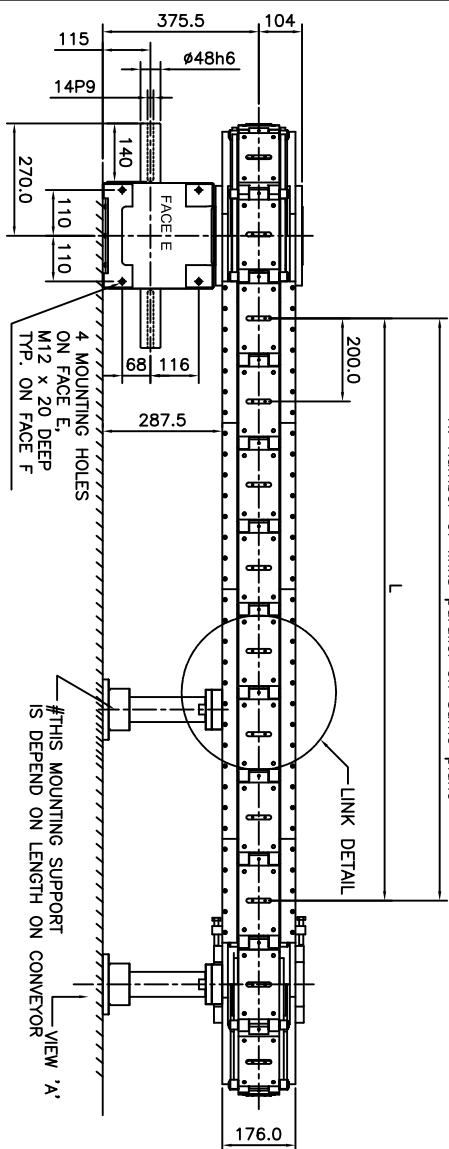


N. Number of links parallel on same plane



4 MOUNTING HOLES ON FACE A,
M12 x 20DEEP
TYP. ON FACE B

NO. OF LINKS**	X	L	N	COMPOSITION
16	800	400	3	D+T
20	1200	800	5	D+S+T
22	1400	1000	6	D+U+T
24	1600	1200	7	D+S+S+T
26	1800	1400	8	D+S+U+T
28	2000	1600	9	D+U+U+T
30	2200	1800	10	D+S+U+S+T
32	2400	2000	11	D+U+S+U+T
34	2600	2200	12	D+U+U+U+T
36	2800	2400	13	D+U+S+S+U+T
38	3000	2600	14	D+U+U+S+U+T

NOTATION :
 T : TAKE UP END = 450mm
 D : DRIVE END = 350mm
 S : 400mm MODULE = 400mm
 U : 600mm MODULE = 600mm
 LINK MATERIAL : Aluminium or Steel
 LINK WEIGHT : Steel=3.4kg, Aluminium = 1.2Kg

INDEX DRIVE	INDEX DETAILS
STOPS	STROKE (mm)
GC150	8
	200

NOTES -

- 1) ** FOR LONGER LENGTH PLEASE CONSULT PACKAM
- 2) # MOUNTING SUPPORT DEPEND ON LENGTH OF CONVEYOR
- 3) TECHNICAL SPECIFICATION AND DRAWINGS MAY CHANGE WITHOUT NOTICE. KINDLY CONTACT PACKAM FOR LATEST VERSION.

ALL DIMENSIONS ARE IN mm UNLESS OTHERWISE SPECIFIED

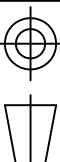


PACKAM CONTROLS PRIVATE LIMITED

PREMIUM PACKAM SERIES

STANDARD INSTALLATION DRAWING--LC200 WITH GC150 CAROUSEL

DRAWN BY	CHECKED BY	DATE	SCALE	DRAWING No.
PMB	KP	12.10.17	NTS	LC200-XX-S-H-01-X



ISSUE
3