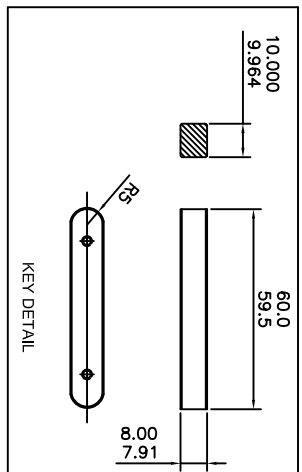
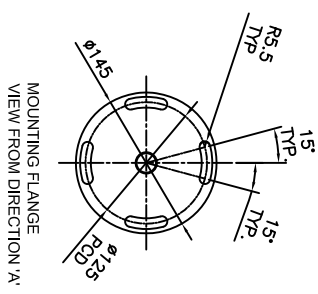
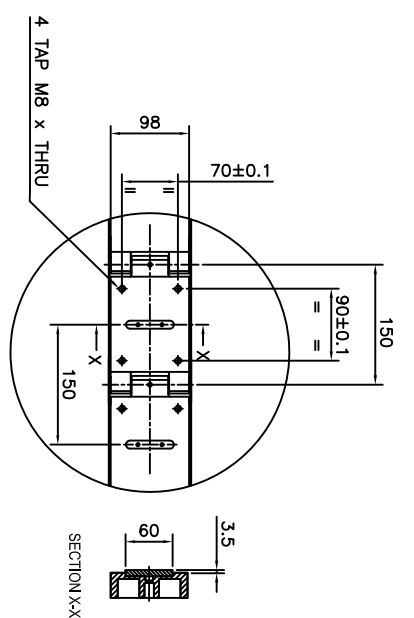
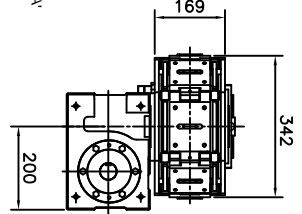
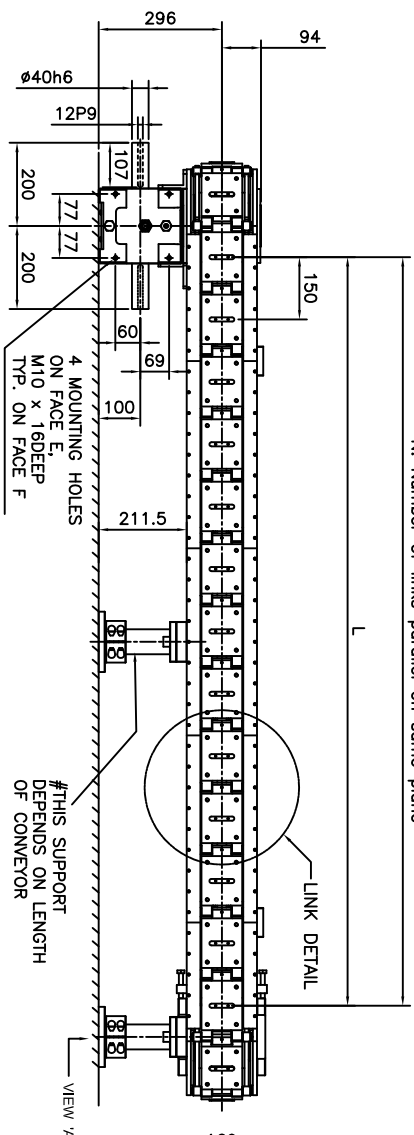


N: Number of links parallel on same plane



4 MOUNTING HOLES ON FACE A,
M10 x 16DEEP
TYP. ON FACE B

EYE BOLT MOUNTING
M10 (FOR LIFTING)

EYE BOLT MOUNTING
M10 (FOR LIFTING)

NO. OF LINKS**	X	L	N	COMPOSITION
14	600	450	4	D-T
18	900	750	6	D-V+T
20	1050	900	7	D+R+T
22	1200	1050	8	D-V+V+T
24	1350	1200	9	D-V+R+T
26	1500	1350	10	D+R+R+T
28	1650	1500	11	D-V+R+V+T
30	1800	1650	12	D+R+V+R+T
32	1950	1800	13	D+R+R+R+T
34	2100	1950	14	D+R+V+V+R+T
36	2250	2100	15	D+R+V+R+R+T
38	2400	2250	16	D+R+R+R+R+T
40	2550	2400	17	D+R+V+R+V+R+T
42	2700	2550	18	D+R+R+V+R+R+T
44	2850	2700	19	D+R+R+R+R+R+T
46	3000	2850	20	D+R+R+V+V+R+R+T

DENOTON :
 T : TAKE UP END = 275mm
 D : DRIVE END = 325mm
 V : 300mm MODULE = 300mm
 R : 450mm MODULE = 450mm
 LINK MATERIAL : Aluminium or Steel
 LINK WEIGHT : Steel=2.575kg, Aluminium = 1.02Kg

INDEX DRIVE	INDEX DETAILS
GC110	6 150
GC110	3 300

- NOTES -
- 1) ** FOR LONGER LENGTH PLEASE CONSULT PACKAM
 - 2) # MOUNTING SUPPORT DEPEND ON LENGTH OF CONVEYOR
 - 3) TECHNICAL SPECIFICATION AND DRAWINGS MAY CHANGE WITHOUT NOTICE. KINDLY CONTACT PACKAM FOR LATEST VERSION.

ALL DIMENSIONS ARE IN mm UNLESS OTHERWISE SPECIFIED



PACKAM CONTROLS PRIVATE LIMITED

PREMIUM PACKAM SERIES
 STANDARD INSTALLATION DRAWING-LC150 WITH GC110 CAROUSAL

DRAWN BY	CHECKED BY	DATE	SCALE	DRAWING No.	ISSUE
PMB	KP	22.09.17	NTS	LC150-XX-S-H-01-X	3